



# Ramakrishna Math & Ramakrishna Mission Kamarpukur

(A Branch Centre of Ramakrishna Math, Belur Math)



**A Report from April 2013 to March 2014**

Issued by:

The Secretary

**RAMAKRISHNA MISSION**

P.O. KAMARPUKUR, DIST. HOOGHLY, WEST BENGAL: 712 612, INDIA

Phone: 03211-244221; E-mail: [rkmkpur@gmail.com](mailto:rkmkpur@gmail.com); Web: [www.rkmkarpukur.org](http://www.rkmkarpukur.org)



A Report  
on the activities of

Ramakrishna Math  
&  
Ramakrishna Mission  
Kamarpukur

(A Branch Centre of Ramakrishna Math, Belur Math)

from April 2013 to March 2014



Issued by:  
The Secretary  
RAMAKRISHNA MISSION

P.O. KAMARPUKUR, DIST. HOOGHLY, WEST BENGAL: 712 612, INDIA

Phone: 03211-244221; E-mail: rkmkpukur@gmail.com; Web: www.rkmkamarpukur.org



## RAMAKRISHNA MISSION, KAMARPUKUR

### THE MANAGING COMMITTEE

√ Swami Jyotirmayananda	President
√ Sri Satyanarayan Maji	Vice-President
√ Dr. Jagannath Mandal	Vice-President
√ Swami Lokottarananda	Secretary
√ Swami Adrijananda	Asst. Secretary
√ Swami Prajnatmananda	Asst. Secretary
√ Swami Chitswarupananda	Treasurer
√ Swami Bhaktipriyananda	Member
√ Swami Jnanamritananda	Member
√ Sri Debi Prasad Basu	Member
√ Sri Asit Kr. Ghosal	Member
√ Sri Kalyan Kumar Mukherjee	Member
√ Sri Shyamapada Mukhopadhyaya	Member
√ Sri Rohindra Nath Tudu	Member
√ Sri Kishori Mohan Dey	Member
√ Sri Paresh Nath Dhara	Member

#### Names of the Auditors:

- |  |  |
|--|--|
| 1. M/s. Sambhu N. De & Co.<br>Chartered Accountants<br>1-B, Old Post Office Street<br>3 <sup>rd</sup> Floor, Kolkata-700 001 | 2. M/s. Manoranjan Roy & Co.<br>Chartered Accountants<br>P-9, Dakshini Co-Op. Housing Society<br>Canal South Road, Kolkata-700 105 |
|--|--|

#### Names of the Bankers:

1. State Bank of India, Arambagh Branch & Maheshpur Branch
2. United Bank of India, Kamarpukur Branch & Baghbazar Branch (Kol.)
3. Axis Bank Ltd., Arambagh Branch



### Introduction:

In the Nineteenth century there was a great conflict between cultural ideas and ideals due to fast influence and impact of western thought into the arena of Indian life. The glamour of the western civilization so strongly affected the Indian people that they began to give up their centuries-old indigenous thought, spiritual disciplines, values and culture very rapidly. Infact, it was a hard challenge and struggle for survival in all respects of our Motherland from this mighty onslaught of the western culture.

At this critical juncture, Sri Gadadhar Chattopadhyay was born on the 18 February, 1836, in an orthodox Brahmin Family of Kamarpukur in the district of Hooghly, who, in after years became world famous as Sri Ramakrishna Paramahansa, an incarnation of God. He proclaimed to the mankind "As many faith so many paths", "Service to man is service to God" and "Ultimate goal of human life is realization of God."

His most illustrious disciple Swami Vivekananda founded Ramakrishna Math & Ramakrishna Mission and its Headquarters at Belur Math, Dist Howrah, West Bengal. The Kamarpukur centre was affiliated to the Headquarters, Belur Math in 1947.

This centre is mainly associated with the holy and hallowed memories of Bhagwan Sri Ramakrishna's birth place and his ancestral home. Some of the significant holy places are :

- ✓ Sri Ramakrishna's Temple built on the place where he was born
- ✓ A mud house with thatched roof where Sri Ramakrishna and Holy Mother Sarada Devi lived



INSIDE THE SRI RAGHUVIR TEMPLE



LAHA'S PATHASHALA



MUKUNDAPUR SHIVA

- ✓ Parlour and Mango Tree planted by Sri Ramakrishna
- ✓ Sri Raghuvir Temple with the family deities of Sri Ramakrishna
- ✓ Jugi's Shiva Temple
- ✓ Haldhar Pukur
- ✓ Laha's Pathashala
- ✓ Temple of Sri Gopeshwar Shiva
- ✓ Sitanath Pyne's House
- ✓ Dhani Kamarini's House
- ✓ Chinu Shankhari's House
- ✓ Budhui Marol Cremation Ground
- ✓ Mukundapur Shiva Temple
- ✓ Cremation Ground and Banyan Tree at Bhutir Khal
- ✓ Palace and Mango Grove of Manik Raja
- ✓ Anur Vishalakshi Temple
- ✓ Jayrambati, Koalpara, Shihore and other places associated with the life of Sri Sarada Devi



SRI GOPESHWAR SHIVA

Holy Kamarpukur, Jayrambati and Belur Math, together form the Golden Triangle of pilgrim centres. Every devotee or admirer of Sri Ramakrishna aspires to visit these three sacred places at least once in a lifetime to offer homage to the Holy Trio.



CHINU SHANKHARI'S HOUSE



JAYRAMBATI



KOALPARA



SHIHORE

## ACTIVITIES—A SYNOPSIS (2013-14)



### MATH—SPIRITUAL, RELIGIOUS AND CULTURAL:

Besides daily worship, religious discourses inside and outside the Math, spiritual retreats and spiritual counselling by the senior monks, the Centre celebrates birthdays of the Holy Trio and other religious personalities. Sri Durga Puja, Sri Kali Puja, Sri Jagannath Mahaprabhu Rath Festival, Christmas Eve, Shivaratri and other occasions are also observed. On Ekadashi days Ramnam & on Purnima days (full moon) Shyamnam Sankirtan are held. The concluding function of the 150<sup>th</sup> Birth Anniversary of Swami Vivekananda was observed through various programmes throughout the year with due solemnity and enthusiasm.

### MISSION—SOCIAL WELFARE ACTIVITIES:

As a part of four-year-long (2010-2014) service programme founded by the Government of India, being conducted by the Headquarters to commemorate the 150<sup>th</sup> Birth Anniversary of Swami Vivekananda. Gadadhar Abhyudaya Prakalpa (all-round personality development of Children) was launched at Kamarpukur on 2nd October, 2010, the Birth-day-tithi of Swami Abhedananda. The total number of beneficiaries of this project were 100, where 43 were boys and 57 were girls.

Vivekananda Swasthya Pariseva Prakalpa (Community Health Programme) was initiated at Deregram, the ancestral place of Sri Ramakrishna. Under the project, there were 54 boys, 46 girls & 3 aged women beneficiaries.



Further, Swami Akhandananda Seva Prakalpa (Integrated Rural Development Programme) aimed at the alleviation of poverty was started since June 2012 and completed on 7th March, 2014.

The details are as follows :

AKHANDANANDA SEVA PRAKALPA (150<sup>th</sup> Birth Anniversary of Swami Vivekananda) Central Govt. Funded Project.

The following projects have been implemented by Pallimangal from June 2012 to March 2014 and the details of the year (2013-14) are given below :



### 1. Vocational Training:

Activities	Centre	No. of Trainees	Duration
Production of Vermicompost & Mushroom	Ramakrishna Mission Pallimangal, Kamarpukur, Hooghly	50	1 Year
Handicraft	-Do-	27	6 months
Batik Print	-Do-	25	3 months
Non-formal Education	-Do-	35	6 Months



### 2. Other Activities:

#### HEALTH & HYGIENE:

- (i) One tube well and one sanitary latrine have been installed at Adibasipara, Kamarpukur during the year.
- (ii) Hygienic Kit distribution (Nutritious food, Soap, Antiseptic, Nailcutter etc.)



Name of village	No. of beneficiaries
Balidewanganj, Koalpara and Kamarpukur	140

#### Financial Assistance:

Financial Assistance given to 36 beneficiaries for making shed for production of mushroom and 7 beneficiaries received one sewing machine each at free of cost. As the mushroom spawn is produced and made available from Pallimangal, beneficiaries are earning a good amount of money by selling mushroom in the local market.

Pecuniary help was given to 3550 poor families of this locality and its adjoining areas for repairing of their dwelling houses and in some cases to conduct funeral ceremony. Books were also distributed to the poor and meritorious students studying in the schools and colleges of the locality. Total 903 poor villagers received blankets during the winter.







#### HUMAN RESOURCE DEVELOPMENT ACTIVITIES:

##### Kamarpukur Ramakrishna Mission Multipurpose School

Kamarpukur Ramakrishna Mission Multipurpose School is a Secondary High School recognized by the Directorate of Secondary Education, West Bengal, which was established in 1962. The students of this institution are obtaining good results over the years. The details of the performance of the Madhyamik Examination for the year (2013-14) are given below:

No. of Students appeared	No. of Students Passed	No. of Students who procured 90% & above	No. of Students who procured 75% & above (Star Marks)	No. of First Division	No. of Second Division	Highest Marks
106	106	23	56	90	16	682

This school is not only conceived as a mere academic institution but rather as a movement for imparting character-building education and to help students to inculcate the fundamental values of truth, purity and unselfishness. This institution inspires the students to actualize one of Swami Vivekananda's vision—a glorious India of the future.





It is worth mentioning that Sriman Arnab Mallick stood first in the Madhyamik Examination 2014 while Sriman Amartya Pal occupied the 8th position. This school is catering to the needs of the rural students, especially from the poor families of this area since 1962. As a result, this school has brought a huge number of students from the low income families, backward sections and minority communities under the fold of education since last five decades. The school is committed to churn out the educated multifaceted human beings with head, heart and hand harmoniously developed.

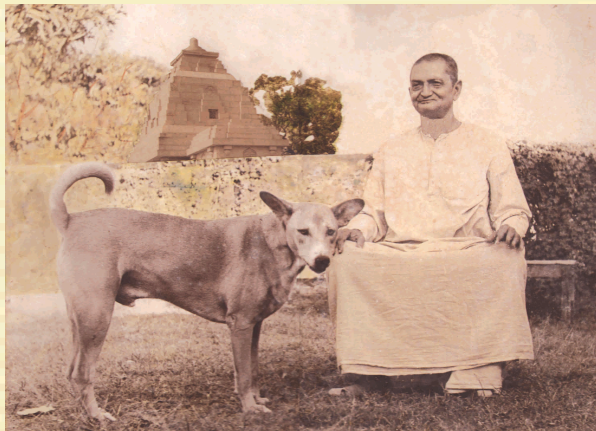
The school has constructed four Science Laboratories (Physics, Chemistry, Biology and Geography) to give the real taste and concept of Science Education to the students. A computerized school Library with a beautiful reading room, 'Online Science Education' in collaboration with the Ramakrishna Mission Vivekananda University, Belur Math, Howrah, and a Language Laboratory of Spoken English recognized by British Council, Kolkata, have opened a new horizon of knowledge before the rural students of this school. Apart from the existing facilities of a computer teaching programme, Gymnasium for body building and play grounds for playing football, cricket, volleyball and a basketball court are also built for the benefit of the students. The 'Swami Vivekananda Sabhagriha' (an auditorium) was constructed to promote the cultural life as well as the aesthetic sense of the students.



The Annual Prize giving Ceremony (2013-14) was arranged at 'Swami Vivekananda Sabhagriha' and Sri Shyamal Sen, Hon'ble Ex-Chief Justice, Calcutta High Court was the President of the function. The students of High School presented cultural programme. Attractive books and certificates of honour were distributed among the students. In the loving memory of Swami Saradeswaranandaji Maharaj, a direct disciple of Holy Mother and the founder Secretary of the High school, a Silver Medal was awarded to Sriman Sayandip Chakraborty, an outgoing student of class-X. This Medal was given in recognition of all round development of a student in last academic year.



The 53rd Annual Sports Meet was held at the school ground and around 670 athletes took active part in the Sports Meet. Swami Jyotirmayanandaji Maharaj, Adhyaksha, Matri Mandir and Ramakrishna Mission Sarada Sevashrama, Jayrambati, was the Guest-in-Chief. Sri Supriya Das Gupta, former footballer of East Bengal Club and a former member of the Bengal Team delivered Presidential address. Prizes and Certificates were distributed among the successful athletes.



Swami Saradeswaranandaji Maharaj

The High school is running with 757 Boys out of which 62 boys are belonging to schedule caste, 7 boys representing schedule tribe group and 71 boys from other backward classes.

The school Hostel accommodated with 102 boys out of which four boys were of schedule caste & 8 boys were of other backward classes.





“Vivek Bithi” (Ramakrishna Mission Primary School, Kamarpukur)

“Vivek Bithi”, a primary school was inaugurated on 31 January 2010 in commemoration of the 175<sup>th</sup> Birth Anniversary of Sri Ramakrishna Paramahansa and began its regular classes on and from 10 March, 2010. The new building of the primary school was inaugurated in 2011 and the 1st floor was completed in 2014. The aim and objective of this institution is to impart Man-making and character-building education to the students of Kamarpukur and its adjacent villages. This school also takes special care of the students belonging to socially deprived & economically backward groups. The total strength of the student is 179, where boys are 159 & girls are 20 in number.

The total student strength of Junior Basic School is 121, where boys are 79 and girls are 42 in number of which 31 students belong to schedule caste and 4 students are from schedule tribe group.

Computer training centre provided Short Term Vocational Training (STVT) course of six months duration in the computer fundamentals under West Bengal State Council of Technical Education (WBSCTE) to 247 rural students during this academic year 2013-14.

Area Library & Reading Room with 11,766 books, 2 daily newspapers and 8 periodicals were running smoothly with an average issue of 950 books per month.

Audio-Visual Mobile Unit was operated to screen films on the various subjects i.e. educational, cultural, health & hygiene in different villages of Goghat-I & II Block in Hooghly District.



## HEALTH CARE FACILITIES

It is learnt that once Bhagwan Sri Ramakrishna told to 'Naren' (Swami Vivekananda) that, "You can see Him (God) when you close your eyes, can't you see Him when you open your eyes?" And He preached him to serve the poor, the down-trodden as God. Swami Vivekananda, while travelling extensively from Kashmir to Kanyakumari, observed that mass population were living in painful and miserable conditions socially and economically. He himself felt the tremendous pain of the poor, the down-trodden and the destitute. His heart was outbursting until he could do something for them. He inspired the world with his historic message to serve God in the poor, the suffering, the ignorant and the sinner. Swami Vivekananda pronounced, "Who serves Jiva, serves God indeed."



'Pallimangal' is the Bengali word, meant rural welfare. Obviously Ramakrishna Mission Pallimangal, Kamarpukur, Hooghly has been working in villages since its inception for the upliftment of the poor and down-trodden with an emphasis on the women folk through its health, education, economic, social and cultural programmes.



### Mobile Medical Service:

Regular Mobile Medical Service is being continued since 1980 in and around the different villages of three Gram Panchayet (GPs) of two districts at free of cost. The mobile medical team is comprised of a general physician, a pharmacist, an assistant, local volunteers and a driver with a Medical Van.

At present, three centres have been continued to visit once in a week at Kamarpukur & Balidewanganj in the district of Hooghly & Koalpara in the district of Bankura.

### Report of Mobile Medical Service :

April'13 To March'14	TOTAL	MALE	FEMALE	CHILD	OLD	NEW	APL	BPL	W.D.
Total	7271	2241	3948	1082	2382	4889	2231	5040	144

### General OPD Service :

Daily OPD Service has already been started at our new OPD building since May 2006. Allopathic, Homoeopathic, Ayurvedic clinics and investigation unit have also been continued, six days in a week at regular basis. Specialist clinics are being continued at regular intervals with kind co-operation of reputed physicians, surgeons, specialist doctors from Kolkata, Burdwan and Arambagh etc.

### Report of OPD:

Health Service	TOTAL	MALE	FEMALE	CHILD	OLD	NEW	APL	BPL	W.D
GOPD	4354	1777	2352	225	1004	3350	2289	2065	204
ENT	354	176	173	05	19	335	260	94	20
E.MED	2158	923	1235	00	909	1249	1091	1067	153
DENT	469	177	290	02	54	415	369	100	31
PAED	390	00	00	390	57	333	224	166	22
MD	247	100	145	02	62	185	181	66	30
GYNAE	209	00	209	00	58	151	85	124	20
G.SURG	402	129	271	02	111	291	215	187	29
SKIN	249	92	154	03	13	236	143	106	08
ORTH	461	179	281	01	77	384	313	148	21
PHYS	709	291	414	04	604	105	545	164	201
E.CLIN	561	2239	3359	13	17	5594	3339	2272	96
E.BIO	1168	510	658	00	00	1168	607	561	24
E.REF	1052	431	621	00	00	1052	584	468	11
E.SPEC	1242	524	718	00	00	1242	674	568	11
E.OPER	1079	450	629	00	00	1079	579	500	46
AYURV	1146	467	672	07	522	624	645	501	115
PANCH	407	208	199	00	349	58	265	142	176
HOMOE	11956	4175	7233	548	6837	5119	8444	3512	289
G.TOTAL	33663	12848	19613	1202	10693	22970	20852	12811	—

Health Service	TOTAL	MALE	FEMALE	CHILD	OLD	NEW	APL	BPL	W.D
U.S.G.	347	78	269	00	00	347	207	140	28
X-RAY	713	335	378	00	00	713	524	189	99
E.C.G.	1353	600	753	00	00	1353	771	582	135
PATHOLOGY	3402	1611	1787	04	00	3402	2267	1135	286
G.TOTAL	5815	2624	3187	04	00	5815	3769	2046	—

### Investigation Report:

#### National Blindness Control Programme:

We are very happy to let you know that National Blindness Control Programme is being continued for twenty six years at this place. It has been started since 1982 at free of cost. Now, we have established a well-equipped Eye Day Care Centre, through which we have been serving the poor and down-trodden village people of the adjacent areas of four districts e.g. Hooghly, Bankura, Burdwan and West Midnapur at regular basis since May 2006. A good number of eminent ophthalmic surgeons, ophthalmic assistants, physicians, O.T. Sisters, staff, devotees and volunteers have been co-operating us in the programme. Screening for operation IOL, Scanning of eye, Biometry for power testing of IOL, operation itself, refraction, medical treatment, spectacle distribution, health education and referral service, investigation facilities are being provided at our Ramakrishna Mission Charitable Dispensary & Eye Day Care Centre, Kamarpukur.



### Report of NBCP:

Total Patients	Screened-4322, Biometry-1168, Refraction-1052, Total-6542					
1. Cataract Operation	Screened	Selected	Operated	Male	Female	No. of Camps
	4322	1403	1079	450	629	46
2. Eye Refraction test	No. of Patients – 1052		No. of Camps – 11			
3. Spectacle	No. of Patients – 1242, Male – 524, Female – 718					

### National Leprosy Elimination Programme:

Leprosy was one of the burning public Health Problems in and around the Arambagh Sub-division in West Bengal. A few years back, it was a disputed uncovered area for a long time. This programme had been started since July, 2001 under direct supervision and guidance of State & Dist. Leprosy Society, in collaboration with German Leprosy Relief Association, in the allotted areas of Goghat-I & II Blocks, Arambagh Block and Arambagh Municipality. The programme was envisaged with general survey, early case detection, diagnosis and MDT treatment, retrieval of the defaulter, interpersonal IEC, Group IEC. Now the scenario of the programme has been changed since 2005.

The role of NGO has since been changed. Passive case detection and referral service to the PHC for diagnosis and treatment, Interpersonal IEC, Group IEC, Contact survey, DPMR management, SER activity etc. are being taken up by us in the above mentioned areas of Arambagh Sub-division. Total population is about 4.5 lacs in the project area. The specific geographical areas have been entrusted to Six Field Workers (PMW), One Supervisor (NMS) and One Doctor.

Annual Report – April 2013 to March 2014

New Cases detected			MCR supply			New Deformity Cases		
PB	MB	Total	Gr - I	Gr - II	Total	Gr - I	Gr - II	Total
14	29	43	02	63	65	00	05	05
Inter Personal Communication	No. of Small group IEC	No. of School IEC		No. of Club IEC	No. of SGSY Group Meeting	No. of Mela IEC	Total	
		Primary School	High School					
3.5 lacs	731	93	14	03	21	00	862	
POD Service	DPMR Camp		Contact survey for new cases		No. of new cases contact screen done			
	No. of Camps	Patients Attend						
264	126	744	34		38			



BESTOWING A NEW VISION

### Revised National Tuberculosis Control Programme:

This programme has been started since 2002 in collaboration with CARE India under Scheme II. Now the service is continuing under Scheme IV of RNTCP programme with direct supervision of District and State Govt. Health Department. It is a designated Microscopy and Treatment Centre [DMCTC] under Arambagh TU since 2007. Now this programme is done under DMCTC Scheme. During the year Sputum examination for early detection for suspected cases and the confirmed patients were treated through our treatment centre & referred to the different sub-centre under Arambagh T.U.

Our activities of this programme like, DOTS treatment service, follow up the cases, defaulter retrieval, health education to the affected person and his/her family members, Inter Personal IEC, sensitisation of the common people etc. are being continued.

TB Programme:- Scheme IV

Project Area:- Five Gram Panchayet

(Kamarpukur G.P., Shyambazar G.P., Bengai G.P., Paschim Para G.P., Hazipur G.P.)

Annual Report-April 2013 to March 2014:

RKM DMCTC Report	No. of new adults visited in OPD = 18424	
(Microscopy Centre) Laboratory activity Result	No. of TB Susp. Examined by sputum smear microscopy	666
	No. of TB Susp. Diagnosed sputum smear Positive	58
	No. of TB Susp. Examined for repeat sputum	01
	No. of repeat sputum smear Positive	00
	No. of TB follow-up Patients examined	72
	No. of TB follow-up positive Patients	08
Case-finding during the reporting Year :		61

Pulmonary						Extra Pulmonary		
Smear Positive (SSP)				Smear negative (SSN)	Smear note done	New	Other Previously treated	Total
New cases	Relapses	Failures	Return after default					
42	09	00	00	05	00	04	00	61

### National HIV AIDS Control Programme:

AIDS is one of the major burning public Health Problems in India since recent past. This programme has been started since 2006 in collaboration with German Leprosy Relief Association. The areas have been allotted Goghat-I & II Blocks, Arambagh Block, Arambagh & Tarakeswar Municipality under NACP project. The programme envisages Inter Personal IEC, Group IEC and Health education campaign in the project area. The specific geographical areas have been entrusted to Six Field Workers (PMW), One Supervisor (NMS) and One Doctor.

Report of NACP:

IEC service							
Inter Personal Communication	No. of Small group IEC	No. of School IEC		No. of Club IEC	No. of Mela IEC	No. of Panchayet IEC (G.P.)	Total
		Primary School	High School				
3.5 Lacs	731	93	14	03	21	00	862



## CAPACITY BUILDING FOR SUSTAINABLE LIVELIHOOD

Ramakrishna Mission Pallimangal is the wing of integrated rural developmental work of Ramakrishna Mission, Kamarpukur, Hooghly and West Bengal as a whole. It is running successfully with several rural development programme including soil testing, self-reliance vocational training and production as well as marketing support system in weaving, handicrafts, incense sticks making and food processing with the primary objective of helping the poor and destitute women folk by providing them some opportunities of income generation and thereby improving their economic as well as social status.

We are thankful to department of Food Processing Industries, Govt. of West Bengal who have provided fund for cluster development Project for making Ghee and Noodles.

A brief description of the programme implemented during the year is mentioned below :

**SOIL TESTING LABORATORY:** Considering the needs and priorities of the area, the soil testing laboratory was established at Kamarpukur in the year 1983. The objective was to encourage the farming community for scientific agriculture with balanced use of plant nutrients for higher production, economy in input cost, maintenance of soil health and reduction in environmental pollution etc. The area is one of the most intensively cultivated areas of West Bengal. The laboratory caters to the need of the farmers of Hooghly and surrounding other districts also.

The following figures depict the performance of this laboratory during the year 2013-14:

Soil samples received from Govt. Dept.	26
Total soil tested during the year	26



**FOOD PROCESSING PROGRAMME:** Considerable quantities of fruits and vegetables such as tomato, green mango, potatoes, pineapples etc. are either wasted or not utilised fully every year during the season. This Food Processing Unit was launched during the year 2001 with an objective of promoting cottage industries with locally available resources, minimizing wastage of perishable fruits and vegetables and for showing the farmers



new source of marketing and simultaneously creating new income opportunities for unemployed poor and destitute persons.

At present 8 different items like Pickle, Jam, Jelly, Sauce, Squash, Kasundi, Papad and

Snacks are being produced in our unit and received very good response and demand from the customers. These are also supplied to different places as per demand.



**MINI JUTE SPINNING PROGRAMME:** This unit has been manufacturing twine from raw jute regularly since its inception in the year 1987. The project was commenced in collaboration with erstwhile Jute Technological Research Laboratories (now NIRJAFT), Department of Science & Technology of Govt. of India and that of Government of West Bengal. The idea was to bring the processing unit at the level of jute growers to help the jute farmers and to provide employment to some rural youths.

No. of persons employed	7
Total Production	22.4 MT



**WEAVING PROJECT:** The Handloom weaving project has been functioning satisfactorily since its birth. Handloom weaving and stitching of products are being done here by women workers. Different types of cotton items are being produced regularly at the unit. They are namely handkerchief, duster, side bag, asan, gamchha etc. A few numbers of women have been trained successfully during the reporting year.

No. of women employed	27
No. of items produced	12



**JUTE HANDICRAFTS PROJECT:** This project has been running since inception in the year 2000-01 and has been proved to be very successful. Different types of bags, decorating items, mobile phone bag, money purse, table mat, cap, office file bag etc. are being produced and sold at the showrooms with very good response.

These are also supplied to various places as per demand. Destitute women are presently working at Pallimangal workshop, Kamarpukur, Raghunathpur, Hazipur, Bhandarhati and individually at their houses.

No. of women employed	85
No. of items produced	57



**INCENSE STICKS MAKING PROJECT:** This project has been continued since its inception in the year 1980. Many poor and destitute women have been trained and earning under the project either working at the Kamarpukur workshop or at their homes. After being trained many women collect raw materials from the workshop and prepare incense sticks at home in their free time in the midst of household works, thus they also support their family economically. This is also sold in Pallimangal showroom and supplied to various places as per demand.

No. of women employed	64
No. of items produced Consisting 100/50/25 sticks	10



**NON-FORMAL EDUCATION:** Due to the social, economical, environmental and many practical difficulties, a considerable part of our rural population is yet to see the light of education. Pallimangal has been conducting a number of Non-formal Education centres at different villages to provide minimum literacy to those who failed to reach for regular schooling. Books, khata, teaching materials, garments and school bags are distributed to every student during this year. Presently 17 such NFE centres for the backward and depressed classes are being run by Pallimangal in 11 villages under 7 Gram Panchayet areas of Goghat-I & II blocks, one in Tarakeswar Municipality and one in Kotalpur, Bankura area through active involvement of village level organizations. The following chart shows the position in detail:



Sl.No.	Name of the Centre with address	Students
01	Hazrapata, Vill: Dashghara, Kamarpukur, Hooghly	21
02	Dasghara Club	16
03	Ganeshbati, P.O. Ratanpur, Hooghly	20
04	Anur Najrul Smriti Sangha, Anur, Hooghly	22
05	Bhurkunda, Hooghly	18
06	Basudebpur, Hooghly	23
07	Nakunda S.R. Ashrama, Vill. Darinakunda, Hooghly	23
08	Beldiha, S.R. Ashrama, Shyambazar, Hooghly	26
09	-do-	25
10	-do-	26
11	Udaypur, Hooghly	24
12	Harishchandrapur, Raghubati, Hooghly	25
13	Tarakeswar Ramakrishna Vivekananda Coaching Centre, Hooghly	19
14	-do-	15
15	Tajpur Gram Seva Samiti, Bankura	20
16	-do-	20
17	Dhaniakhali, S.V. Sevashram, Hooghly	27
<b>Total students:</b>		<b>370</b>



**SHOWROOM & SALES PROMOTION:** To promote the marketing of products as well as for the greater exposure and interaction with different customers and artisans, a regular showroom-cum-sales counter is run by Pallimangal within the Ashrama premises. With the same view in mind, the pallimangal puts up special sales counters outside Kamarpukur on various occasions as under :

Occasion	Place
'Kalpataru Utsav'	Cossipur Udyanbati, Cossipur, Kolkata
Swami Vivekananda Milan Mela	Simla Street, Kolkata

Total sales at all these places were overwhelming and beyond our expectations. We received huge response from thousands of customers for our different types of products like jute handicrafts, incense sticks, food processing products etc. Two staff members and one volunteer look after the Kamarpukur show room regularly. In addition to staff members of Pallimangal, 25-30 volunteers help in sales at the special sales counters in different festivals and exhibitions.

#### OTHER WELFARE ACTIVITIES:

Besides the above, Pallimangal has launched the following works among the economically backward people within its limited resources during this year.

Sl. No.	Purpose	Male	Female	Child	Total
i)	Clothes, garments and blankets are distributed on the occasions of Durga Puja, Tithi Puja & Winter season	34	512	357	903
ii)	Sewing Machine	-	4	-	4
iii)	Educational Help	2	-	-	2
iv)	Pecuniary Help	-	2	-	2

#### KRISHI MELA [AGRICULTURAL FAIR]:

The livelihood of the people of this area is based on agricultural products. The land of this area is more fertile and suitable for all types of agricultural crops throughout the year.

In view of helping and catering awareness of the local and adjacent farmers of this area with scientific knowledge, maintenance of soil health, modern technology, integrated/organic farming and all round development related with the agricultural products, the Krishi Mela is being arranged every year since 2012 and the fair becomes very popular.

The integrated nutrient management/ organic farming components like, Vermicompost, Green Manuring, Leaf Manuring, Bio-fertilizers, Azolla and Bio-/Botanical-Pesticides are produced and demonstrated to the farmers in Krishi Mela at practical field after use in agriculture in Ramakrishna Mission Kamarpukur along with the results.

A good number of farmers participated in the fair which is very encouraging.

An exhibition and competition on best Agricultural products, Live Stock, Fish etc were held and prizes were awarded for the exhibits as a token of inspiration.



**RAMAKRISHNA MISSION, KAMARPUKUR**  
**P O: KAMARPUKUR, DIST: HOOGHLY (W.B)**  
**GENERAL SECTION**

**RECEIPTS AND PAYMENTS ACCOUNTS FOR THE YEAR ENDED 31ST MARCH 2014**

RECEIPTS		AMOUNT	AMOUNT	PAYMENTS	AMOUNT	AMOUNT
To	Opening Balance					
	Cash & Bank		81,69,145.15	Establishment Expenses		
To	Donation			Salary & Wages	3,55,511.00	
	General	21,804.00		P.F. Contribution	18,024.00	3,93,958.00
	Scholarship to Students	82,000.00		Gratuity Fund Contribution	20,423.00	
	Vivek Vithi (Primary School)	2,02,511.00		Miscellaneous Exp.	120.00	
	Charitable Dispensary	7,24,808.00		Maintenance of Car	21,949.00	
	Permanent Fund Donation	10,000.00		Tiffin Exp.	4,405.00	
	(Charitable Dispensary)			Bank Charges	642.00	60,236.00
	Welfare Work	37,101.00		Printing & Stationery	33,120.00	
	Herbal Project	11,600.00		Flood Relief		1,12,401.00
	Flood Relief	1,12,401.00		Educational Expenses		
To	Sundry Sales			Training Programme (Computer)	1,21,192.00	
	Sale of Land			Student Stipends	90,300.00	
				Cultural Exp.	89,917.00	3,01,409.00
				National Youth Day		
				Vivek Bithi (Primary School)		
				Electricity & Water	13,120.00	
				Games & Sports	4,244.00	
				Maintenance of Computer	12,080.00	
				Gardening	2,059.00	
				Miscellaneous Exp.	210.00	
				Petty Equipment	11,556.00	
				Postage & Telephone	2,333.00	
				Printing & Stationery	10,999.00	
				Salary & Wages	5,60,700.00	
				Tiffin Exp.	20.00	
				Washing, Cleaning & Sanitation	5,044.00	
				Food & Fuel	4,613.00	6,26,978.00
				Medical Expenses:		
				Charitable Dispensary		
				Salary & Wages	5,87,519.00	
				P F Contribution	18,815.00	
				Gratuity Fund Contribution	23,903.00	
				Audit Fees	1,124.00	
				Washing, Cleaning & Sanitation	6,573.00	
				Electricity and Water Charges	80,637.00	
				Drug for Indoor/Outdoor Patients	2,00,401.00	
				Food & Fuel	76,977.00	
				Postage & Telephone	1,640.00	
				Printing & Stationery	24,823.00	
				Maintenance of Computer	27,050.00	
				Cultural Exp.	4,410.00	
				Petty Equipments	7,222.00	
Total C/O			2,07,70,226.15	Total C/O		15,21,864.00

**RAMAKRISHNA MISSION, KAMARPUKUR**

RECEIPTS		AMOUNT	AMOUNT	PAYMENTS	AMOUNT	AMOUNT
To	<b>B/F</b> Charitable Dispensary Donation for Construction Fees & Charges House Rent Allowances Deduction	- 2,73,000.00 8,52,708.00 900.00	2,07,70,226.15	<b>B/F</b> Repair General Repair to Building Travelling & Transport Expenses <b>Miscellaneous Expenses</b> P. F. Adm. Charges Insurance Contribution for LIB Contribution to HQ	21,365.00 1,52,805.00 15,811.00 6,744.00 3,097.00 3,592.00	15,21,864.00
To	<b>Govt. Grant</b> For Agriculture Computer Training Krishi Mela Charitable Dispensary Ayurvedic/Panchakarma Solar Lighting	10,000.00 1,18,400.00 53,900.00 8,96,377.00 2,00,000.00 5,47,020.00	1,126,608.00	<b>Ayurvedic Unit (Panchakarma)</b> Salary & Wages Contingency Drugs/Medicine M P School Student Youth and Welfare <b>Foreign Contribution</b> Student Stipend Welfare Work (Stipend)	1,89,850.00 1,217.00 18,553.00	13,433.00 975.00
To	<b>Fees &amp; Charges</b> Vivek Bithi MP School MP School Computer For Ayurvedic/Panchakarma	3,91,663.00 2,92,672.00 2,00,146.00 9,975.00	18,25,697.00	<b>Project Exp. (Rural Development)</b> Herbal Garden Community Health <b>Repair, Renewal and Maintenance</b> Maintenance of Computer Postage & Telephone Travelling Exp. Audit Fees Rent & Taxes Welfare Work	23,455.00 1,45,000.00	2,09,620.00 45,509.00
To	Interest from Bank Interest on FD from HQ Dividend from Other Deposit Dividend from Bond	10,97,661.00 2,99,192.88 7,81,552.12 26,063.01	8,94,456.00	<b>Gadadhar Abhyudaya Prakaipa :</b> Educational Expenses Health & Hygiene Establishment Exp.	17,550.00 2,046.00 6,313.00 26,983.00 1,713.00 4,854.00	1,68,455.00
To	<b>Received From Head Quarters</b> Welfare Work	22,04,469.01	70,000.00	<b>Vivekananda Swasthya Pariseva Prakaipa</b> Malnutrition—Prevention & Treatment Health Care (Preventive-Curative) Continuing Health Care Health & Moral Education Health Environment Monitoring & Evaluation	1,02,391.00 3,39,131.00 8,478.00	59,459.00 1,08,750.00
To	<b>Foreign Contribution</b> Through Center <b>Through Head Quarters</b> Welfare Work Vivek Bithi Construction for Charitable Dispensary Interest from Bank	60,553.00 1,10,000.00 9,00,000.00 24,00,000.00 2,69,283.78	37,39,836.78	<b>Capital Expenditure : Building Construction</b> Ch. Dispensary Vivek Bithi Medical Equipment (Charitable Dispensary) Electrical Equipment (Charitable Dispensary) Electrical Equipment (General) Investment	3,15,357.00 59,293.00 5,000.00 16,538.00 47,152.00 6,660.00	4,50,000.00
To	<b>Akhandananda Seva Prakaipa</b> Central Govt. Grants received through Head Quarters	8,00,000.00	8,00,000.00		37,90,267.00 7,61,252.00 6,89,784.00 14,085.00 2,34,620.00 7,75,000.00	45,51,519.00
	Total C/O		<b>3,14,31,292.94</b>	Total C/O		<b>89,08,661.00</b>

**RAMAKRISHNA MISSION, KAMARPUKUR**

RECEIPTS		AMOUNT	AMOUNT	PAYMENTS	AMOUNT	AMOUNT
To	<b>B/F</b> <b>Gadadhara Abhyudaya Prakaalpa</b> Central Govt. Grants received through Head Quarters		3,14,31,292.94	<b>B/F</b> Permanent Fund Investment Permanent Fund Investment (F.C.) Other Investment	1,90,747.00 9,33,800.00 1,79,01,456.00	89,08,661.00
To	<b>Vivekananda Swasthya Pariseva Prakaalpa</b> Central Govt. Grants received through Head Quarters		4,50,000.00	<b>Inter Fund Loan</b> To AVMU To Jr Basic School	23,622.00 97,738.00	1,21,360.00
To	<b>Capital Accounts</b> Building Fund Donation (Charitable Dispensary) Endowment Fund Donation Endowment Fund (FC)	1,90,747.00 9,33,800.00	4,50,000.00	<b>Akhandananda Seva Prakaalpa</b> Improvement of Health Nonformal Education Awareness & Health & Hygiene Vocational Training	30,572.00 60,846.00 54,105.00 7,02,008.00	8,47,531.00
To	<b>Deposit</b> Students' Deposit Students' Store Advance Realised Loan Repayment from Hostel Staff & Institution Share P.F. Investment Withdrawn Provident Fund Health Insurance Claim Sundry deposit Others Vivek Bithi Charitable Dispensary	26,81,460.00 18,310.00 36,048.00 39,803.00 1,04,758.00 7,88,001.00 7,748.00 37,303.00	11,24,547.00	<b>Professional Tax</b> General Ayurveda Charitable Dispensary	1,080.00 550.00 1,410.00	3,040.00
To	<b>Professional Tax</b> General Ayurveda Charitable Dispensary	1,080.00 550.00 1,410.00	26,99,770.00	<b>TDS</b> Charitable Dispensary Vivek Bithi	8,721.00 1,550.00	10,271.00
To	<b>TDS</b> Vivek Bithi Charitable Dispensary	36,048.00 39,803.00	1,73,827.67	<b>Security Deposit</b> Health Insurance Disbursed Vivek Bithi Charitable Dispensary P.F. Investment (with RKM P.F. Belur Math) P.F. Settlement	1,04,758.00 16,279.00 43,603.00 36,048.00 39,803.00	2,40,491.00
To	<b>Professional Tax</b> General Ayurveda Charitable Dispensary	1,080.00 550.00 1,410.00	10,13,661.00	<b>Deposit Disbursed :</b> Students' Deposit Students' Stores Pallimangal Medical Sundry Deposit others Sundry Amount Payable Advance Paid	27,08,588.00 6,420.00 9,000.00 1,001.00	27,25,009.00 5,50,000.00 38,000.00
To	<b>TDS</b> Vivek Bithi Charitable Dispensary	1,550.00 7,461.00	3,040.00	<b>Closing Balance</b> Cash & Bank Balance		32,09,294.61
<b>Total</b>			<b>3,73,93,149.61</b>	<b>Total</b>		<b>3,73,93,149.61</b>

Examined and found Correct  
**For Sambhu N De & Co.**  
Chartered Accountants  
FRN-307055E

"EMERALD HOUSE" 3rd Floor  
1B, Old Post Office Street, Kolkata-700 001  
Phone No. 2243-6037  
Dated: 7th Day of June 2014

Secretary

# RAMAKRISHNA MISSION, KAMARPUKUR

P O: KAMARPUKUR, DIST: HOOGHLY (W.B)

## GENERAL SECTION

### INCOME AND EXPENDITURE ACCOUNTS FOR THE YEAR ENDED 31ST MARCH 2014

EXPENDITURE		AMOUNT	AMOUNT	INCOME	AMOUNT	AMOUNT
To	<b>Establishment Expenses</b>			By		
	Salary & Wages	3,55,511.00		General	21,804.00	
	P.F. Contribution	18,024.00		Scholarship to Students	82,000.00	
	Gratuity Fund Contribution	20,423.00	3,93,958.00	Vivek Bithi (Primary School)	2,02,511.00	
To	Miscellaneous Exp.	120.00		Charitable Dispensary	7,24,808.00	
	Maintenance of Car	21,949.00		Permanent Fund Donation (Charitable Dispensary)	10,000.00	
	Tiffin Exp.	4,405.00		Welfare Work	37,101.00	
	Bank Charges	642.00	60,236.00	Herbal Project	11,600.00	
	Printing & Stationery	33,120.00	1,12,401.00	Flood Relief	1,12,401.00	12,02,225.00
To	Flood Relief					
	Educational Expenses			Sundry Sales		62,400.00
	Training Programme (Computer)	1,21,192.00		Sale of Land		1,13,00,658.00
	Student Stipends	90,300.00				
	Cultural Exp.	89,917.00	3,01,409.00			
To	<b>Vivek Bithi ( Primary School )</b>			Fees & Charges	8,52,708.00	8,53,608.00
	Electricity & Water	13,120.00		Income from House Property	900.00	
	Games & Sports	4,244.00				
	Maintenance of Computer	12,080.00		<b>Govt. Grant</b>		
	Gardening	2,059.00		For Agriculture	10,000.00	
	Miscellaneous Exp.	210.00		Computer Training	1,18,400.00	
	Petty Equipment	11,556.00		Krishi Mela	53,900.00	
	Postage & Telephone	2,333.00		Charitable Dispensary	8,96,377.00	
	Printing & Stationery	10,999.00		Ayurvedic/ Panchakarma	2,00,000.00	
	Salary & Wages	5,60,700.00		Solar Lighting	5,47,020.00	
	Tiffin Exp.	20.00				18,25,697.00
	Washing, Cleaning & Sanitation	5,044.00		<b>FEES &amp; CHARGES</b>		
	Food & Fuel	4,613.00	6,26,978.00	Vivek Bithi	3,91,663.00	
To	National Youth Day		26,882.00	MP School	2,92,672.00	
To	<b>Medical Expenses</b>			MP School Computer	2,00,146.00	
	<b>Charitable Dispensary</b>			For Ayurvedic/ Panchakarma	9,975.00	8,94,456.00
	Salary & Wages	5,87,519.00		Interest from Bank	10,97,661.00	
	P F Contribution	18,815.00		Interest on FD from HQ	2,99,192.88	
	Gratuity Fund Contribution	23,903.00		Dividend from Other Deposit	7,81,552.12	
	Audit Fees	1,124.00		Dividend from Bond	26,063.01	22,04,469.01
	Washing, Cleaning & Sanitation	6,573.00				
	Electricity and Water Charges	80,637.00				
	Drug for Indoor/Outdoor Patients	2,00,401.00				
	Food & Fuel	76,977.00				
	Postage & Telephone	1,640.00				
	Printing & Stationery	24,823.00				
	Maintenance of Computer	27,050.00				
	Total C/O		<b>15,21,864.00</b>	Total C/O		<b>1,83,43,513.01</b>



**RAMAKRISHNA MISSION, KAMARPUKUR**

EXPENDITURE		AMOUNT	AMOUNT	AMOUNT	INCOME	AMOUNT	AMOUNT
	B/F			15,21,864.00	B/F		1,83,43,513.01
	Cultural Exp.	4,410.00			Receive From Head Quarter		
	Petty Equipments	7,222.00			Welfare Work	70,000.00	70,000.00
	Repair General	21,365.00					
	Repair to Building	1,52,805.00					
	Travelling & Transport Expenses	15,811.00		12,51,075.00			
To	<b>Miscellaneous Exp.</b>				<b>Foreign Contribution</b>		
	P. F. Adm. Charges	6,744.00			Through Center	60,553.00	
	Insurance	3,097.00			Through Head Quarter	—	
	Contribution for LIB	3,592.00		13,433.00	Welfare Work	1,10,000.00	
	Contribution to HQ			975.00	Interest from Bank	2,69,283.78	4,39,836.78
	<b>Ayurvedic Unit (Panchakarma)</b>						
	Salary & Wages	1,89,850.00					
	Contingency	1,217.00					
	Drugs/Medicine	18,553.00		2,09,620.00	<b>Akhandananda Seva Prakaipa</b>		
	M P School Student Youth and Welfare			45,509.00	Central Govt. Grants received		
	<b>Foreign Contribution</b>				through Head Quarters		8,00,000.00
	Student Stipend	23,455.00		1,68,455.00			
	Welfare Work (Stipend)	1,45,000.00					
To	<b>Project Exp. (Rural Development)</b>				<b>Gadadhar Abhyudaya Prakaipa</b>		
	Herbal Garden			—	Central Govt. Grants received		
	Community Health			77,904.00	through Head Quarters		4,50,000.00
To	<b>Repair, Renewal and Maintenance</b>			98.00			
	Maintenance of Computer	17,550.00					
	Postage & Telephone	2,046.00					
	Travelling Exp.	6,313.00					
	Audit Fees	26,983.00					
	Rent & Taxes	1,713.00		59,459.00	<b>Vivekananda Swasthya Pariseva Prakaipa</b>		
	Welfare Work	4,854.00		1,08,750.00	Central Govt. Grants received		4,50,000.00
To	<b>Gadadhar Abhyudaya Prakaipa</b>				Health Insurance Claim		
	Educational Expenses	1,02,391.00					
	Health & Hygiene	3,39,131.00					
	Establishment Exp.	8,478.00		4,50,000.00			
To	<b>Vivekananda Swasthya Pariseva Prakaipa</b>						
	Malnutrition-Prevention & Treatment	3,15,357.00					
	Health Care (Preventive-Curative)	59,293.00					
	Continuing Health Care	5,000.00					
	Health & Moral Education	16,538.00					
	Health Environment	47,152.00					
	Monitoring & Evaluation	6,660.00		4,50,000.00			
	Total C/O			43,57,142.00	Total C/O		2,05,53,349.79

**RAMAKRISHNA MISSION, KAMARPUKUR**

EXPENDITURE		AMOUNT	AMOUNT	INCOME		AMOUNT	AMOUNT
B/F			43,57,142.00	B/F			2,05,53,349.79
	<b>Akhandananda Seva Prakalpa</b>						
	Improvement of Health	30,572.00					
	Nonformal Education	60,846.00					
	Awareness & Health & Hygiene	54,105.00					
	Vocational Training	7,02,008.00					
	Health Insurance Disburse						
	Surplus		1,53,48,676.79				
	<b>Total</b>		<b>2,05,53,349.79</b>		<b>Total</b>		<b>2,05,53,349.79</b>
To	<b>Capital Expenditure</b>			By	Surplus B/F		1,53,48,676.79
	Land & Building	—			Net Deficit		—
	Movable Assets	9,38,489.00					
To	Surplus Transfer to Schedule of Fund		1,44,10,187.79				
	<b>Total</b>		<b>1,53,48,676.79</b>		<b>Total</b>		<b>1,53,48,676.79</b>

In terms of our Audit Report of even date annexed.

**For Sambhu N De & Co.**

Chartered Accountants

FRN-307055E

“EMERALD HOUSE” 3rd Floor  
1B, Old Post Office Street, Kolkata-700 001  
Phone No. 2243-6037  
Dated: 7th Day of June 2014

Secretary

S N Mitra  
Partner  
M No-011678

**RAMAKRISHNA MISSION, KAMARPUKUR**  
P.O. : KAMARPUKUR , DIST. : HOOGHLY ( WEST BENGAL )

**GENERAL SECTION**  
**BALANCE SHEET AS AT 31ST MARCH 2014**

PREVIOUS YEAR	LIABILITIES	SCHED-ULE NO.	AMOUNT	AMOUNT	PREVIOUS YEAR	A S S E T S	SCHED-ULE NO.	AMOUNT	AMOUNT
1,34,59,658.00	<b>CAPITAL FUND</b>				1,26,21,471.92	LAND & BUILDING	B		1,66,34,830.92
	Land & Building Fund	A		1,65,30,296.00		MOVABLE PROPERTIES	B		27,77,247.10
26,58,456.10	Movable Properties Fund	A		29,62,393.10		<b>INVESTMENT</b>			
	Endowment & Permanent Fund					Endowment & Permanent Fund	C	65,52,305.00	
54,27,758.79	Endowment & Permanent Fund	A		65,52,305.79	1,16,15,459.00	Other fund	C	2,48,64,157.00	3,14,16,462.00
	<b>GENERAL FUND</b>				20,293.15	<b>SUNDRY AMOUNT RECEIVABLE</b>	D		20,293.15
	Ashrama General	A	2,49,72,975.64			Grant Receivable			
1,10,88,191.64	Medical	A	5,25,403.79	2,54,98,379.43		<b>SECURITY DEPOSIT</b>	E		2,004.85
5,50,000.00	SUNDRY AMOUNT PAYABLE	A	-	-	1,003.85	(Electricity & Gas)			
19,66,701.97	SUNDRY DEPOSIT :				6,00,083.33	<b>INTERFUND LOAN TO HOSTEL</b>			5,47,615.66
3,50,000.00	INTER FUND LOAN (PLM)	A		27,14,373.97	81,69,145.15	CLOSING BALANCE			32,09,294.61
<b>3,55,00,766.50</b>	<b>TOTAL</b>			<b>5,46,07,748.29</b>	<b>3,55,00,766.50</b>	<b>TOTAL</b>			<b>5,46,07,748.29</b>

In terms of our Audit Report of even date annexed

**For Sambhu N De & Co.**

Chartered Accountants

FRN-307055E

"EMERALD HOUSE" 3rd Floor  
1B, Old Post Office Street, Kolkata-700 001  
Phone No. 2243-6037  
Dated: 7th Day of June 2014

S N Mitra

Partner

M No-011678

Secretary

## RAMAKRISHNA MATH, KAMARPUKUR

### LIST OF DONERS OF RS. 10,000/- AND ABOVE DURING THE YEAR 2013-14

NAME	PLACE	AMOUNT	PURPOSE
Mrs. Ira Neogi	Kolkata	25,000	Revenue Donation
Sri Nirburn Mukherjee	Durgapur	10,000	Revenue Donation
Smt. D. Sridevi	Hyderabad	15,000	Revenue Donation
Smt. Ratanmani Chakraborty	Kolkata	10,001	Revenue Donation
Swami Viswanathanandaji Maharaj	Kolkata	10,000	Revenue Donation
Swami Aparanandaji Maharaj	Howrah	10,000	Revenue Donation
Sri Goutam Pohit	Kolkata	10,000	Revenue Donation
Sri Ranjit Kumar Chowdhury	Kolkata	25,000	Revenue Donation
Sri Himanshu Bhattacharyya	Kolkata	25,000	Revenue Donation
Smt. Jayashree Chandra	Kolkata	10,000	Revenue Donation
Sri Sachinnandan De	Kamarpukur	10,000	Revenue Donation
Smt. Nupur Maji	Hooghly	15,000	Revenue Donation
Sri Arjun Rao	Hyderabad	15,000	Revenue Donation
Smt. Maya Pal	Kolkata	20,000	Revenue Donation
Mr. S. K. Hazra	Kolkata	10,000	Revenue Donation
Sri Samarnath Sinha	Kamarpukur	10,000	Endowment & Permanent
Fund (Corpus) Smt. Jayashree Mukhopadhyay	Kolkata	10,000	Revenue Donation
Sri Sunil Kanti Roy	Kolkata	120,000	Revenue Donation
Mr. Venkatesh D	Chennai	100,000	Revenue Donation
Mr. Dinendra Marik	Kolkata	25,525	Revenue Donation
Sri Parthasarathi Gupta	Kolkata	30,000	Revenue Donation
Smt. Mridula Banerjee	Kharagpur	10,000	Revenue Donation
Prof. Sukumar Maity	Midnapore	10,000	Revenue Donation
Smt. Safia Mitra	Kolkata	10,000	Revenue Donation
Smt. Mytreyee K. M	Dauanogere	10,000	Revenue Donation
Smt. Ishwari Chetan Merani	Kharadi, Pune	30,000	Revenue Donation
Swami Shivapradananda	Kamarpukur	11,192	Revenue Donation
Smt. Sudipta Senlaskar	Gowhati	10,000	Revenue Donation
Sri Ratan Bhattacharjee	Tripura	15,000	Revenue Donation
Swami Bhaveswaranandaji Maharaj	Kamarpukur	23,600	Revenue Donation
Smt. Rita Sen	Kolkata	20,001	Revenue Donation
Sri Ranadhir Talukdar	Kolkata	25,000	Revenue Donation
Swami Aparananda Maharaj	Howrah	10,000	Revenue Donation
Smt. Maitrayee Dattagupta	Kolkata	10,000	Revenue Donation
Sri R. Balasubramanian	Chennai	10,000	Revenue Donation
Sri B. M. Ramesh	Bangalore	10,000	Revenue Donation
Sri Biswajit Samanta	Baroda	10,000	Revenue Donation
Dr. Aniruddha Pal	Ambarnath	10,000	Revenue Donation

NAME	PLACE	AMOUNT	PURPOSE
Sri Chandra Chood Sharad Neelkanth	Pune	11,111	Revenue Donation
Smt. Suvalaxmi Sen	Kolkata	10,002	Revenue Donation
Smt. Nandita Mitra	Howrah	10,000	Revenue Donation
Smt. Anita Sen	Kolkata	10,000	Revenue Donation
Sri Hemanta Kumar Sinha	Jhargram	13,268	Revenue Donation
Smt. K. S. Chandra	Bangalore	10,000	Revenue Donation
Sri Asis Kumar Chandra	Kolkata	10,001	Revenue Donation
Smt. Kalpana Das	Kamarpukur	10,000	Revenue Donation
Smt. Mridula Niyogi	Kolkata	17,600	Revenue Donation
Smt. Sabitri Sengupta	Kolkata	50,000	Revenue Donation
Sri Sujit Nath Nandi	Kolkata	15,001	Revenue Donation
Sri Nilratan Seth & Smt. Reba Seth	Kanchrapara	100,000	Revenue Donation
Sri Chandi Das Chatterjee	Burdwan	25,001	Revenue Donation
Dr. Ashim Chakraborty	Kolkata	10,000	Revenue Donation
Sri Sajal Kumar Biswas	New Bombay	15,000	Revenue Donation
Smt. Banasri Das	Kolkata	100,000	Endowment & Permanent Fund (Corpus)
Smt. Banasri Das	Kolkata	100,000	Endowment & Permanent Fund (Corpus)
Sri Ashutosh Chaudhury	Imphal, Manipur	100,000	Endowment & Permanent Fund (Corpus)
Swami Lokottarananda	Kamarpukur	15,000	Endowment & Permanent Fund (Corpus)
Smt. Sukla Deb Kanango	Santiniketan	10,000	Endowment & Permanent Fund (Corpus)
Sri Abanikanta Mukherjee	Asansol	10,000	Endowment & Permanent Fund (Corpus)
Smt. Roma Nandi	Kolkata	25,000	Endowment & Permanent Fund (Corpus)
Mrs. Mahamaya Dey	Kolkata	20,000	Endowment & Permanent Fund (Corpus)
Smt. Sabujkoli Sen	Bolpur	20,000	Endowment & Permanent Fund (Corpus)
Srimat Swami Putananda Maharaj	Kolkata	16,000	Endowment & Permanent Fund (Corpus)
Sri Anamitra Das	Kolkata	10,000	Revenue Donation
Smt. Soma Mitra & Smt. Jayanti Sarkar	Kolkata	20,000	Endowment & Permanent Fund (Corpus)
Sri Dipak Kumar Gupta	Kolkata	100,000	Endowment & Permanent Fund (Corpus)
Smt. Purnima Ghosh	Howrah	10,002	Endowment & Permanent Fund (Corpus)
Sri Satyes Chandra Guha	Kolkata	50,000	Endowment & Permanent Fund (Corpus)
Sri K. A. Krishnan	Chennai	10,000	Endowment & Permanent Fund (Corpus)
Smt. Kanak Das	Hingaljanj	20,000	Endowment & Permanent Fund (Corpus)
Sri Kallol Chowdhury	Kolkata	50,000	Endowment & Permanent Fund (Corpus)
Sri Himanis Bhattacharyya	Kamarpukur	10,000	Endowment & Permanent Fund (Corpus)
Smt. Kanika Bandyopadhyay	Kotulpur	10,000	Endowment & Permanent Fund (Corpus)
Sri Jugal Kishor Kar	Durgapur	50,000	Endowment & Permanent Fund (Corpus)
Sri Chanchal Kumar Dutta	Burnpur	30,000	Endowment & Permanent Fund (Corpus)
Dr. Vinaya Pendse	Fatehpura	25,000	Endowment & Permanent Fund (Corpus)
Dr. Gopal Chandra Setua	Kamarpukur	10,000	Revenue Donation
Sri Sudin Chowdhury	Hyderabad	10,000	Revenue Donation
Smt. Juthika Ghosh	Murshidabad	11,000	Revenue Donation

## RAMAKRISHNA MISSION, KAMARPUKUR

### LIST OF DONERS OF RS. 10,000/- AND ABOVE DURING THE YEAR 2013-14

NAME	PLACE	AMOUNT	PURPOSE
Swami Bhaveswarananda Maharaj	Kamarpukur	10,000	Revenue Donation
Smt. Shampa Ghosh	Kolkata	18,000	Revenue Donation
Ms. Aditi	New Delhi	15,000	Charitable Dispensary & Eye Care Unit
Swami Bhaveswarananda Maharaj	Kamarpukur	10,000	Revenue Donation
Dr. Susmita Majumdar	Sheoraphuli	10,000	Revenue Donation
Swami Bhaveswarananda Maharaj	Kamarpukur	10,000	Revenue Donation
Sri Arjun Rao	Hyderabad	10,000	Revenue Donation
Ghose's Eye Clinic	Howrah	14,952	Revenue Donation
Sri Sunil Ranjan Guha	Kolkata	49,000	Revenue Donation
Swami Bhaveswarananda Maharaj	Kamarpukur	10,000	Revenue Donation
Mr. Saurabh Mitra	Mumbai	10,000	Revenue Donation
Sri Sunil Ranjan Guha	Kolkata	49,000	Revenue Donation
Swami Bhaveswarananda Maharaj	Kamarpukur	10,000	Revenue Donation
Palsons Derma Pvt. Ltd.	Kolkata	10,000	Revenue Donation
Ghose's Eye Clinic	Howrah	54,747	Endowment & Permanent Fund (Corpus)
Swami Bhaveswarananda Maharaj	Kamarpukur	10,000	Revenue Donation
Sri Soumen Banerjee	Kolkata	10,000	Revenue Donation
Swami Bhaveswarananda Maharaj	Kamarpukur	10,000	Revenue Donation
Dr. Gopal Chandra Setua	Kamarpukur	10,000	Revenue Donation
Swami Bhaveswarananda Maharaj	Kamarpukur	10,000	Revenue Donation
Smt. Kalpana Das	Kamarpukur	50,000	Revenue Donation
Smt. Purnima Chawbey	Bardhaman	10,000	Revenue Donation
Sri Sunil Ranjan Guha	Kolkata	49,000	Revenue Donation
Sri Sunil Ranjan Guha	Kolkata	28,000	Revenue Donation
Sri Abhijit Basu	Kolkata	15,000	Revenue Donation
Sri Deepak Mohan Narula	New Delhi	100,000	Revenue Donation
Smt. Hasi Mukherjee	Chinsurah, Hooghly	10,000	Revenue Donation
Sri Tufan Ghosh	Kolkata	500,000	Revenue Donation
Sri Sunil Ranjan Guha	Kolkata	49,000	Revenue Donation
Maya Choudhury Memorial Charitable Trust	Kolkata	25,000	Revenue Donation
German Leprosy Relief Association Marium Hills	Germany	200,000	Revenue Donation
Ramakrishna Foundation	Los Angeles, U. S.A	24,573	Revenue Donation
Vedanta Society Of Winnipeg & Edmonton	Canada	12,000	Revenue Donation
German Leprosy Relief Association	Chennai	450,000	Revenue Donation
Sri Kamal Krishna Konar	Champadanga	100,000	Revenue Donation
Smt. Anyesha Nandi	Prince Anwar Shah Road	15,000	Revenue Donation
Sri Sunil Ranjan Guha	Garia, Kolkata	49,000	Revenue Donation
German Leprosy Relief Association Rehabilitation Fund	Chennai-600030	13,000	Revenue Donation
Smt. Hasi Mukherjee	Chinsurah, Hooghly	10,000	Endowment & Permanent Fund (Corpus)
Sri Paritosh & Pallabi Ghosh	Belur Math, Howrah	10,000	Revenue Donation

KAMARPUKUR CALLING



KUMARI PUJA

SRI KALI PUJA

MOST REVERED PRESIDENT MAHARAJ



MOST REVERED VICE PRESIDENTS MAHARAJ



SRI RAMAKRISHNA IN THE TEMPLE



SRI THAKUR'S TITHI PUJA - THE PROCESSION





OVEN-FRESH PRASAD



DISTRIBUTION OF PRASAD



SHIVARATRI



PRAYER



DEVOTIONAL SONGS



OUR DAIRY



WATCHING



CULTIVATION



GREEN PLANT



FLOWER GARDEN

# RAMAKRISHNA MATH & RAMAKRISHNA MISSION

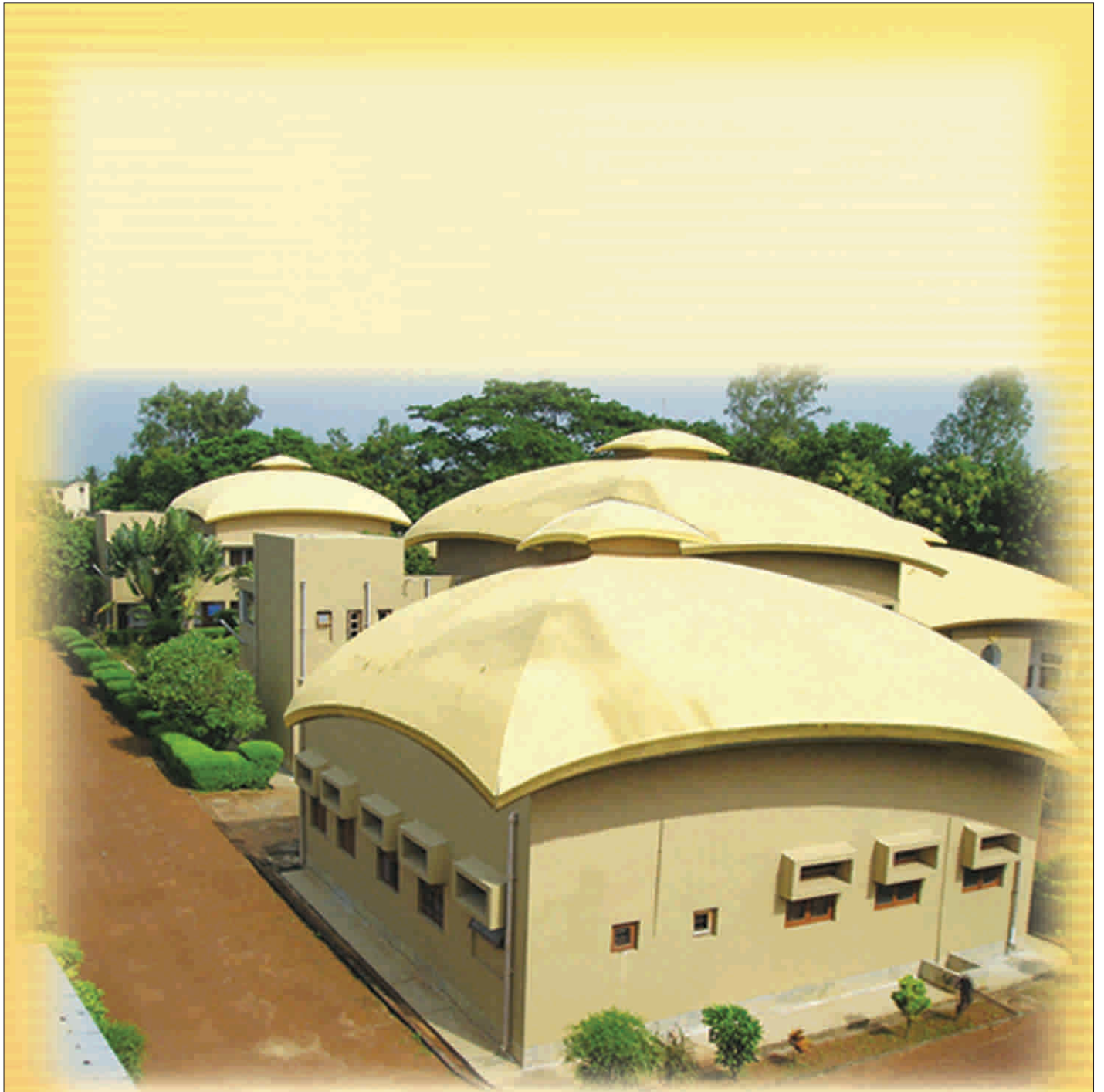
P.O. KAMARPUKUR, DIST. HOOGHLY, WEST BENGAL: 712 612, INDIA

## OUR THANKS AND APPEAL

We are very much grateful to all those contributors, friends and admirers who have helped us in various ways in carrying out the noble activities taken up by us with the motto “for one’s own salvation and the welfare of all”. Ramakrishna Math engages itself in cultural, religious and spiritual activities. Whereas, Ramakrishna Mission is mainly concerned with the social welfare activities. The donations to Ramakrishna Math and Ramakrishna Mission are thankfully accepted and acknowledged.

The Cheque or Draft may kindly be drawn in favour of: “RAMAKRISHNA MATH, KAMARPUKUR” or “RAMAKRISHNA MISSION, KAMARPUKUR” and sent to the above address clearly mentioning the purpose of donation. Please note that ours being a charitable institution, all donations are exempt from Income Tax under Section 80G of the Income Tax Act-1961.





*“Truthfulness is the only ‘tapasya’  
(austerity) in this Kali Yuga.”*

**–Sri Ramakrishna Paramahansa**